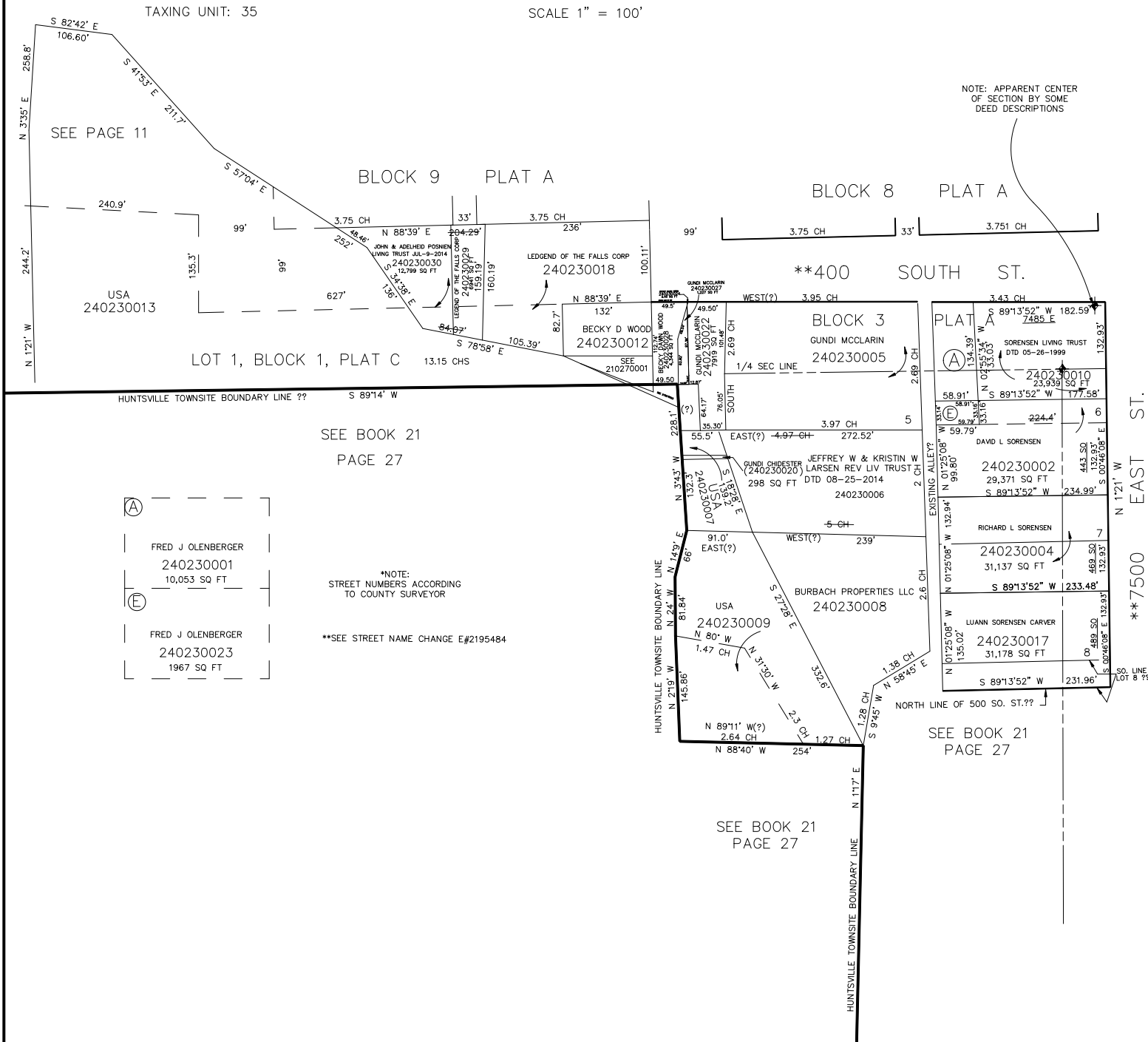


PART OF THE S 1/2
 SECTION 18, T.6N., R.2E., S.L.B. & M.
 & LOT 1, BLOCK 1, PLAT C & LOTS 5, 6, 7 & 8 BLK. 3, PLAT A
 IN HUNTSVILLE TOWNSITE

TAXING UNIT: 35

SCALE 1" = 100'

NOTE: APPARENT CENTER OF SECTION BY SOME DEED DESCRIPTIONS



SEE PAGE 11

BLOCK 9 PLAT A

BLOCK 8 PLAT A

**400 SOUTH ST.

LOT 1, BLOCK 1, PLAT C

BLOCK 3

PLAT A

HUNTSVILLE TOWNSITE BOUNDARY LINE ??

SEE BOOK 21
PAGE 27

- (A) FRED J OLENBERGER
240230001
10,053 SQ FT
- (E) FRED J OLENBERGER
240230023
1967 SQ FT

*NOTE:
STREET NUMBERS ACCORDING
TO COUNTY SURVEYOR

**SEE STREET NAME CHANGE E#2195484

HUNTSVILLE TOWNSITE BOUNDARY LINE

HUNTSVILLE TOWNSITE BOUNDARY LINE

NORTH LINE OF 500 SO. ST.??

SEE BOOK 21
PAGE 27

SEE BOOK 21
PAGE 27

**7500 EAST ST.